



UNIVERSITY OF CALIFORNIA  
Agriculture and Natural Resources

# Tutorial and Best Practices for Using Biteable to Create Animated Videos

Melissa Vilas  
Nutrition Educator  
CalFresh Healthy Living, UC  
University of California Cooperative Extension  
El Dorado County West Slope

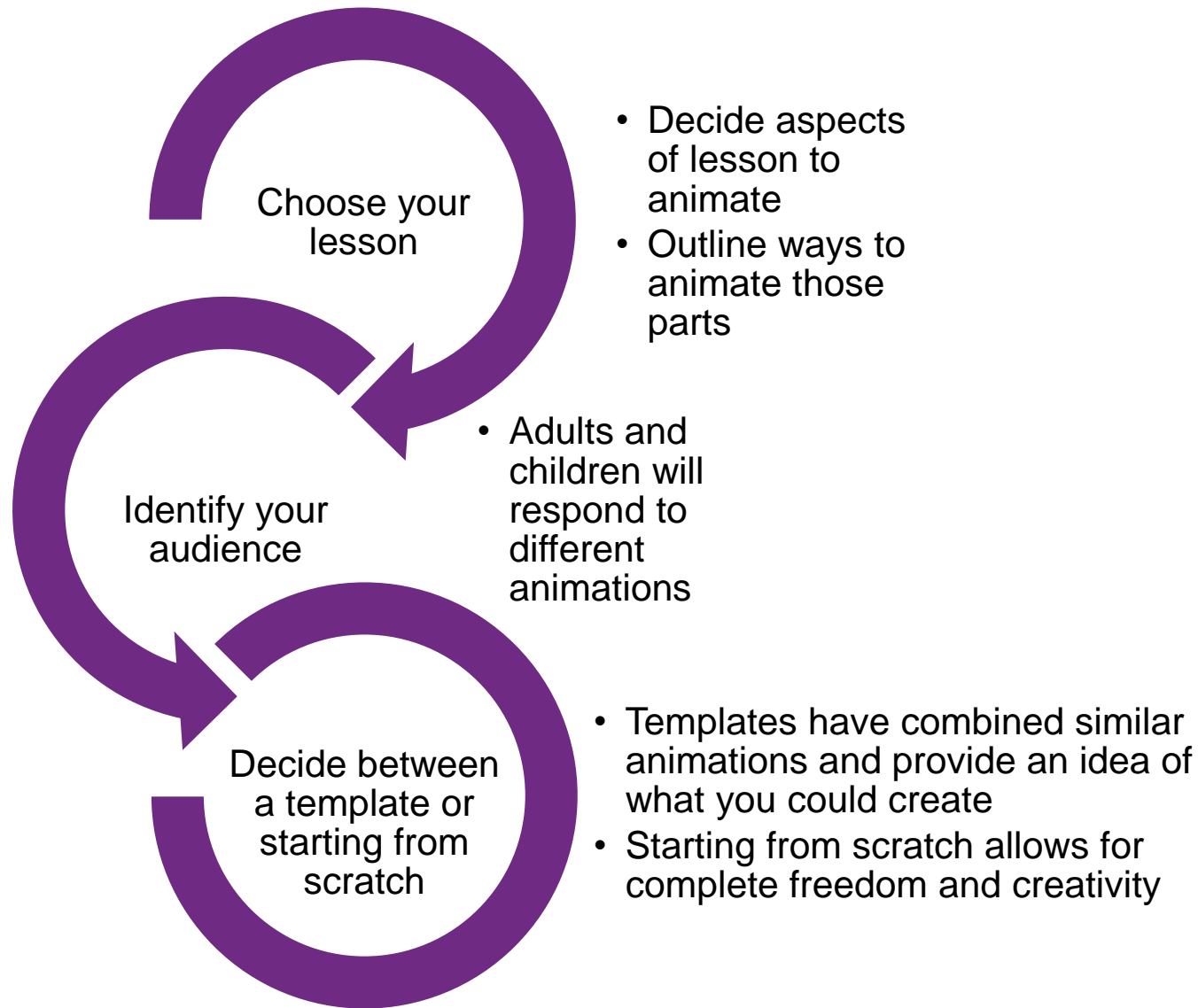
# Objective

By the end of today's webinar, you will be able to demonstrate how to make a biteable animated clip and recall best practices of creating these animations.

# How to get started?



California's CalFresh Healthy Living, with funding from the United States Department of Agriculture's Supplemental Nutrition Assistance Program – USDA SNAP, produced this material. These institutions are equal opportunity providers and employers. For important nutrition information, visit [www.CalFreshHealthyLiving.org](http://www.CalFreshHealthyLiving.org).



# Using a Template

- Five categories to choose from: explain, present, promote, share, communicate
  - Subcategories of audience or message you are trying to get across
- Can edit: text, font, scene order, scene timing, color, sound, and add/delete scenes
- Pro: Have paired together similar animations into a concise presentation
- Con: Not always applicable to our work, can be more difficult to edit every slide and have to delete/ add than it is to start from scratch

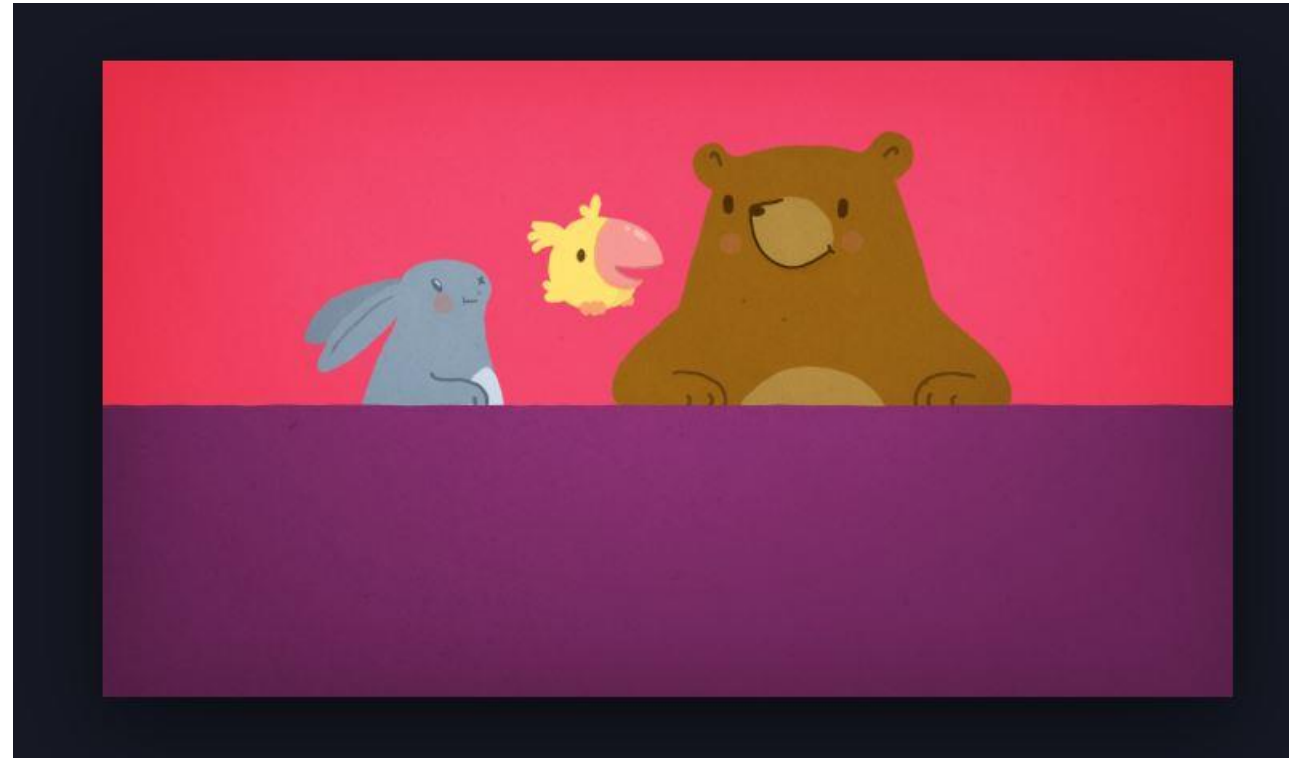
# Starting from Scratch

- Forty-one categories to choose scenes from
  - Each category has similar characters or art style within animation
- Can edit: text, font, scene order, scene timing, color, sound, and add/delete scenes
- Pro: Have total creative freedom from the beginning; all time spent creating applicable slides
- Con: Your responsibility to sort through scenes to find ones that fit in, more time spent making sure all animations are cohesive

# Changing Colors

# Best Practice #1: Know your Audience

- Younger students will not relate to an adult animation or simple/sleek graphic designs
- Adult students won't take to cartoon characters or flashy colorful designs



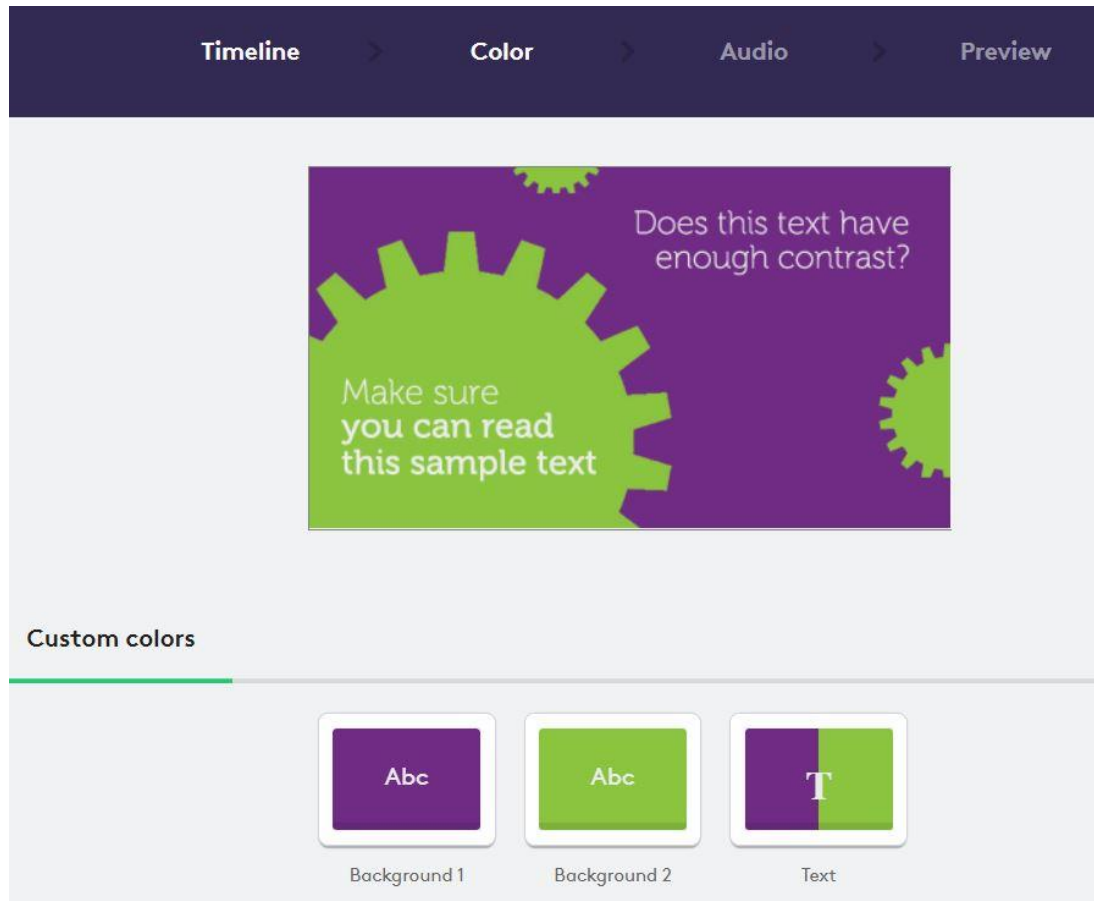


# Best Practice #2: Keep Characters the Same



- Characters in animations should be used to tell the story of the lesson
- Keep characters the same throughout for lesson consistency

# Best Practice #3: Use CFHL Colors



Using CalFresh Healthy Living Colors helps to keep all elements of videos or PowerPoints branded.

# Inserting into PowerPoints

- **Google screen recorders** – easily used to record video and convert into MP4
- **Biteable Pro:** Different plans available to download videos
- **Inserting MP4s**– MP4 animated video clips can be inserted into PowerPoint slides by clicking insert then selecting the video file from your computer

# Lessons Learned

- **Animations are enhancements:** The animations were additions to the 20 minute lesson videos to increase engagement, as making a 20 minute video would be very difficult
- **Starting off takes time:** While you are still learning scenes available, be prepared to spend a little while going through the many categories of scenes to choose ones to use
  - After learning, a 2 min clip takes about 15 minutes to make
- **Get creative:** Many scenes won't perfectly fit the lesson, so spend time finding different ways to illustrate the message

# Thank you!