

# CalFresh Healthy Living, UC Town Hall: October 15<sup>th</sup> Agenda

**Overview of the CFHL, Health Equity Initiative, including the  
ASNNA Guiding Principles and National Cooperative  
Extension Health Equity and Wellbeing Framework (0:46)**

Katherine Soule, PhD Director of CFHL Health Equity Initiative

**State Office Updates (1:00:28)**



# An Introduction to the CFHL Health Equity Initiative

Katherine E. Soule, PhD  
Director of CFHL Health Equity Initiative

CFHL, UC Townhall  
October 15, 2024



# What is Health Equity?

"The absence of unfair and avoidable differences in health among groups of people, whether those groups are defined socially, economically, demographically or geographically."

~ World Health Organization, 2024



# Current CFHL HEI Efforts

---

- Secondary data analysis for statewide needs assessment
- Translating priority curricula
- Developing photo repository
- SIA & CDSS specific activities
- National adaption of equity toolkit for SNAP-Ed
- Developing CFHL Health Equity Initiative project summary



# Health Equity in Cooperative Extension

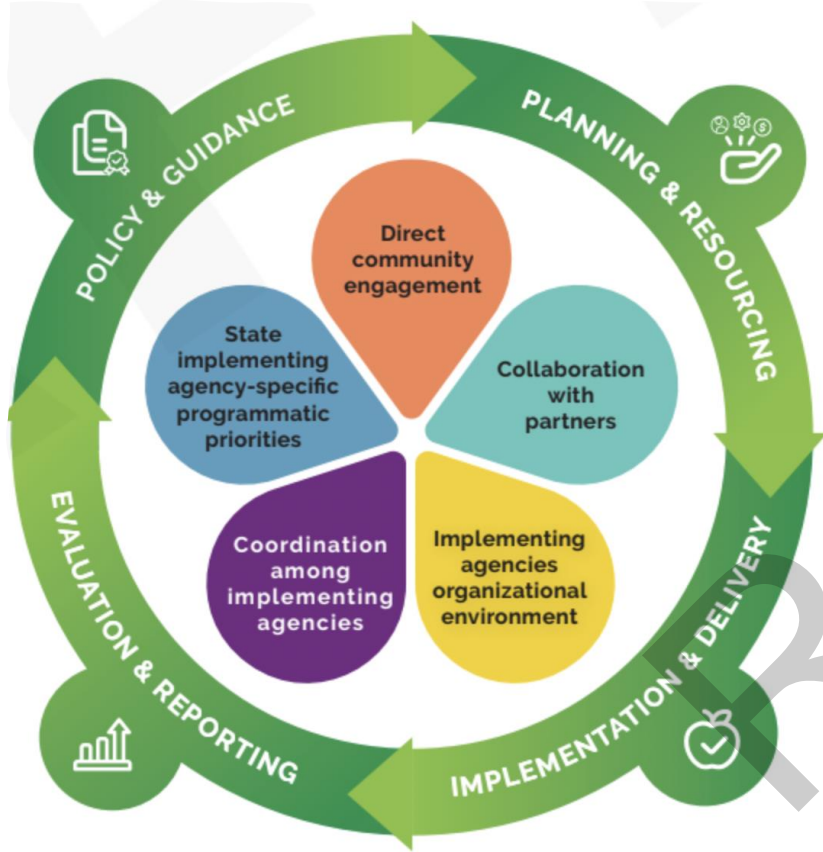


# Supporting Frameworks

- 1 CFHL Equity Strategic Framework (in development)
- 2 ASNNA Guiding Principles for Equity
- 3 National CE's Health Equity and Wellbeing Framework



# CFHL Equity Strategic Framework (draft)



## Goal 1: Community

Meaningfully engage and share power with communities most impacted by health inequities.

## Goal 2: Capacity

Build capacity, adopt a shared language, and establish a unified approach for implementing equity strategies across all CFHL programs.

## Goal 3: Program

Refine CFHL program planning and delivery to maximize health equity impacts

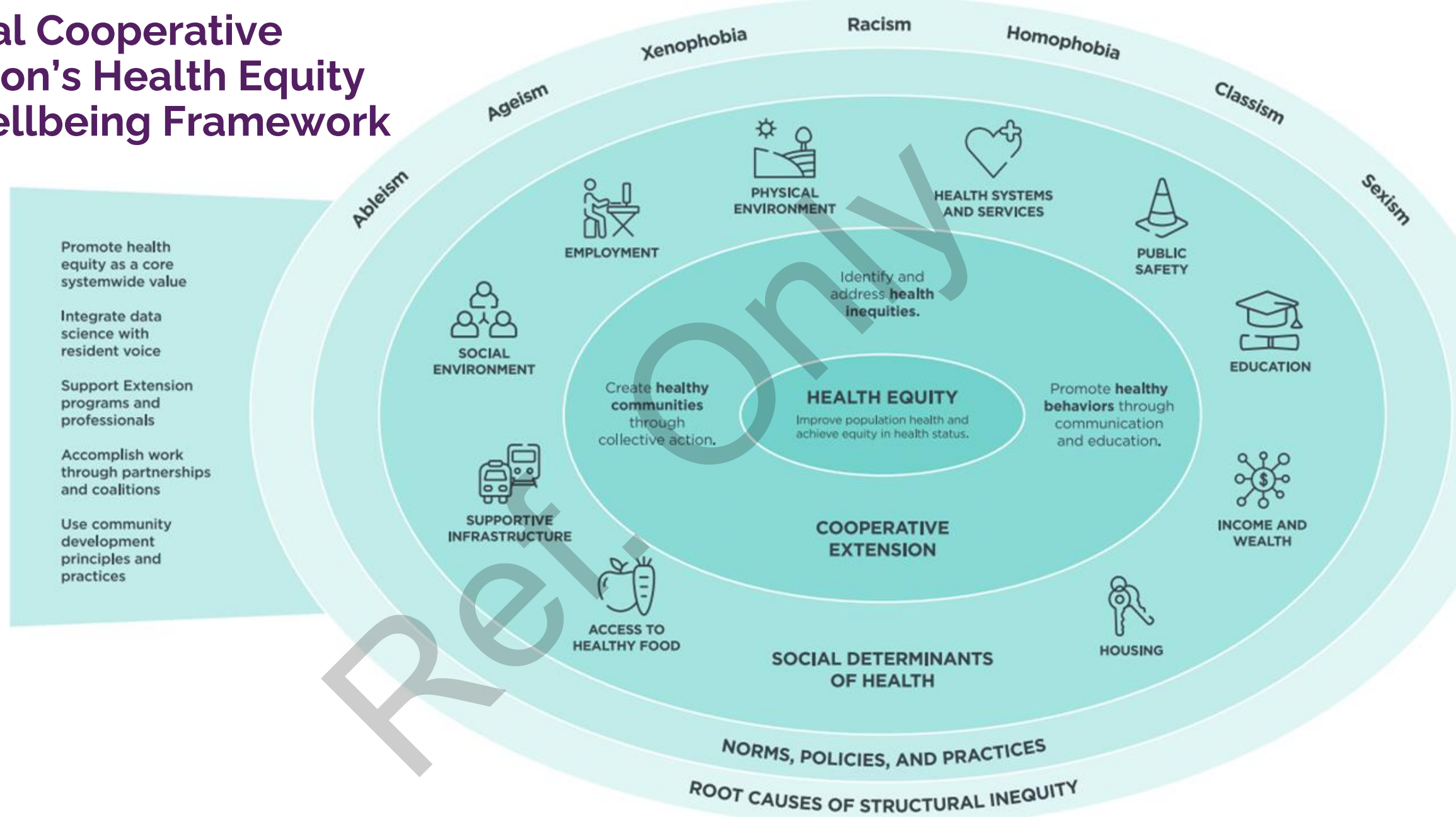
# ASNNA Guiding Principles for Equity

1. Centering People
2. Authentic Community Engagement
3. Starting with Strengths
4. Impact Over Intent
5. Integrity, Transparency, and Accountability
6. Cross Sector Partnerships





# National Cooperative Extension's Health Equity and Wellbeing Framework



# Next Steps

- How can you use the ASNNA Guiding Principles for Equity to increase equity in your own work?
- In your sphere of influence, how can you continue to support improvements in SDOH through your role with CFHL, UC?
- Reach out if you want to connect on the presentation or future efforts. My email is: kesoule@ucdavis.edu







# State Office Updates



# FFY 2024 CFHL, UC Site Visit Counties



Quarter 1 – Central Sierra (Amador County)



Quarter 2 – San Mateo (Informal)



Quarter 3 – Kings and Tulare Counties



Quarter 4 – Stanislaus and Merced Counties



# FFY 2024 Management Evaluations



CDSS ME – **Tehama County** (March 4th– 8th)



CDSS ME – **San Francisco County** (April 29th – May 3rd)



USDA, FNS ME – **Alameda County** (April 8th – 12th)



# CFHL, UC FFY 2025 Site Visit Counties

- Q1 Riverside
- Q2 San Joaquin
- Q3 Butte Cluster – Glenn
- Q4 Imperial







# CalFresh Healthy Living 2025 Forum

## Poster Abstract Submissions due November 22

Poster decision notification on **December 27**

Final poster due **January 27**

- Poster abstracts should align with ASNNA Race, Health, Social Equity Committee's *Guiding Principles to Embed Equity in SNAP-Ed*
- Posters should address one of these guiding principles:

**Starting with Strengths | Authentic Community Engagement  
Impact Over Intent | Cross-Sector Partnerships**





**Oregon State University**  
**Extension Service**



## **FFY25 Regional BEPA 2.0 Train the Trainer Academies**

- BEPA 2.0 Online Implementer Training Required
  - Reach out to Paul Tabarez – [pjtabarez@ucdavis.edu](mailto:pjtabarez@ucdavis.edu)
- Regional Trainings – Riverside, Tulare, and Davis
  - One Day – 9am – 3pm



# Smarter Lunchrooms Movement (SLM) Train-the-Trainer Webinar

SLM Technical Advising Professionals (TAPs) are invited to join a Train-the-Trainer webinar to learn more about leading a guided lunchroom observation.

## **Date:**

November 12, 2024, 3:00 – 4:00 pm

## **Registration:**

For more details and registration information, please visit the CFHL, UC Training Calendar.



For questions, please contact Anna Jones at [anajones@ucdavis.edu](mailto:anajones@ucdavis.edu).



# FFY 2024 Annual Report Timeline and Materials on CFHL, UC home page

## FFY 2024 Annual Report Timeline & Information



## FFY 2024 Annual Report Templates NEW

[FFY24 County/Cluster Narrative Annual  
Report Template](#)

[FFY24 County Profile Template](#)

**FFY24 Annual Report SNAPshot Template -**  
County-specific SNAPshot templates have  
been posted into the Annual Report County  
Specific folders in BOX



## FFY 2024 Annual Report NEW

[FFY 2024 County Annual Report Timeline Detail](#)

### September 20, 2024

- EatFresh.org Mini Course data disseminated to counties

### October 3, 2024

- **PEARS "Closed" for all CFHL, UC LIA's** | Complete all  
FY24 PEARS Data Entry
  - UCCE teams will not be able to enter any new  
FFY2024 information into PEARS after **October 3rd**

### October 4, 2024

- PEARS will switch over to **FFY 2025** reporting

### October 4-25, 2024

- State Office will conduct final review of PEARS FFY24 data
  - State Office will identify any remaining errors and email or  
call UCCE Program Managers/Supervisors
  - UCCE teams' will confirm updates proposed by State  
Office



# Key Annual Report Upcoming Dates

## October 4-25, 2024

- State Office will conduct final review of PEARS FFY24 data
  - State Office will identify any remaining errors and email or call UCCE Program Managers/Supervisors
  - UCCE teams' will confirm updates proposed by State Office
  - State Office will make the changes once confirmed

## November 19, 2024

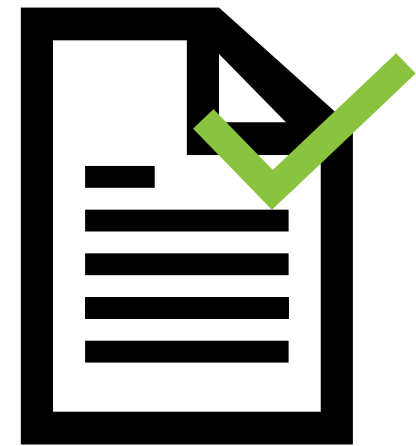
- **Summary PEARS & Evaluation Survey Results Available from State Office**
  - Data will be posted to BOX on a rolling basis
  - Counties will receive an email when data is available

## December 20, 2024

- **First Draft FFY 2024 Annual Report documents due to State Office |** submit through BOX Annual Report Folder
  - FFY24 County/Cluster Narrative Annual Report
  - FFY24 County Profile
  - FFY24 Annual Report SNAPshot w/ Actuals

# FFY24 State Office PEARS Data Cleaning

- Thank you for all the hard work entering FFY24 data!
- All data is under review. If any errors are found, you will receive an email from the SO with suggested corrections that require your approval





# Demographic Data Cards Posted to CFHL, UC Website & PEARS

## Adult Demographic Cards

.....

**Without ID#** NEW

[English](#) | [Spanish](#) | Chinese-Traditional | [Hmong](#) | Tagalog | [Vietnamese](#) | [Arabic](#) | [Russian](#)

**With ID#** NEW

[English](#) | [Spanish](#)

**Family / Group Demographic Card** NEW

[English](#) | [Spanish](#) | [Hmong](#) | Vietnamese | [Arabic](#) | [Russian](#)

**Large Print Adult Demographic Card** NEW

[English](#) | [Spanish](#)

Survey \*

-----

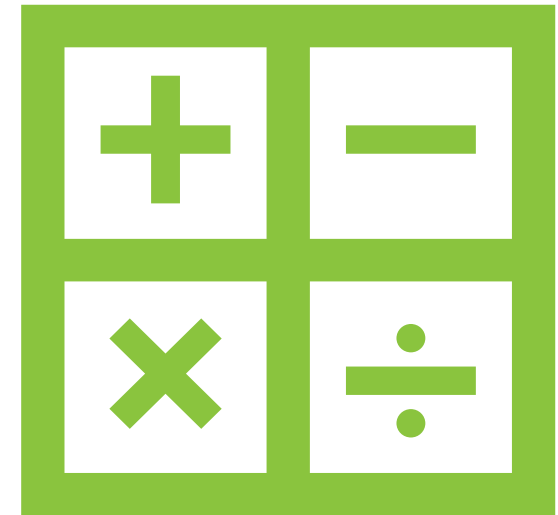
|

- Adult Demographic Data Card - English (UCD Copy)
- Adult Demographic Data Card - Hmong (UCD Copy)
- Adult Demographic Data Card - Russian (UCD Copy)
- Adult Demographic Data Card - Spanish (UCD Copy)
- Adult Demographic Data Card - Vietnamese (UCD Copy)



# Updates to School Demographics in PEARS

- **Auto Calculate** functionality is updated and active for all schools in PEARS
- If your school site does not have auto calculate functionality, please email Melanie Alexander at [magerdes@ucdavis.edu](mailto:magerdes@ucdavis.edu)



# FFY 2024 Evaluation Survey Results

Statewide and County/Cluster Results are Now Available in Box for the Following Surveys:

Qualtrics Reports (by County)	Excel Results File (by County/Cluster Program)
<ul style="list-style-type: none"><li>• Youth Participatory Action Research (YPAR) Retrospective Survey</li><li>• YPAR Project Assessment Survey</li><li>• Teens as Teacher Survey (TAT)</li><li>• Youth Leader Survey (YLS)</li><li>• Teacher Observation Tool (TOT)</li><li>• Physical Activity Teacher Observation Tool (PA TOT)</li><li>• Large Group Taste Test Tool (LG TTT)</li><li>• Preschool Taste Test Tool (Pre-K TTT)</li></ul>	<ul style="list-style-type: none"><li>• Eating and Activity Tool for Students (EATS) Pre/Post Survey</li><li>• Youth Taste Test Tool (Youth TTT) – <b>NEW</b> Format</li></ul>



# November – Evaluation Office Hours

## Purpose

- Review new Youth Taste Test Tool (Youth-TTT) Excel Results File
- Bring any questions about FFY2024 evaluation results

## Scheduled:

- Monday, Nov 4<sup>th</sup> – 10-11am
- Wednesday, Nov 13<sup>th</sup> – 2-3pm



# FFY 2025 Updates to Evaluation Webpages

- Evaluation Webpage
  - Student Consent Form – *simplified version*
- **Evaluation Tool Webpages** *FFY25 Portals Open*
  - Youth – revised consent
  - Adult
  - Family Centered
  - PSE Assessment



<https://www.flation.com>

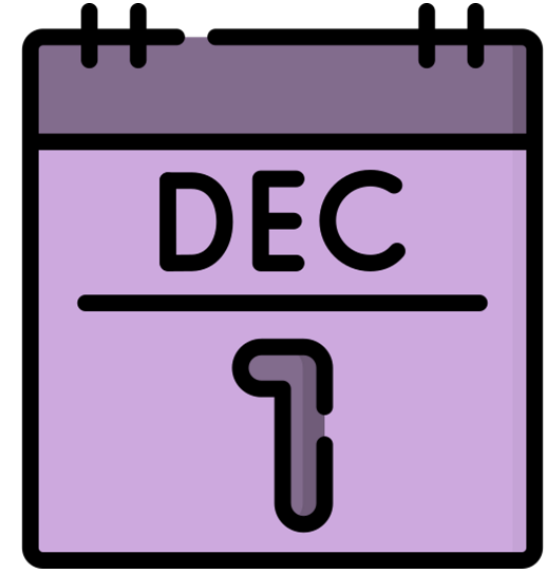
# FY25 CFHL Civil Rights Training

For FY25 and beyond – Civil Rights training must be completed by **December 1** each year

Self-paced training now available!

- Make sure to select **FY25** training
- Submit certificate to your Supervisor

See PD 2018-02 for further information



December icons created  
by Freepik - Flaticon

MORE  
INFO

Required Ongoing Trainings – CFHL, UC website  
CFHL Statewide Training website and newsletter

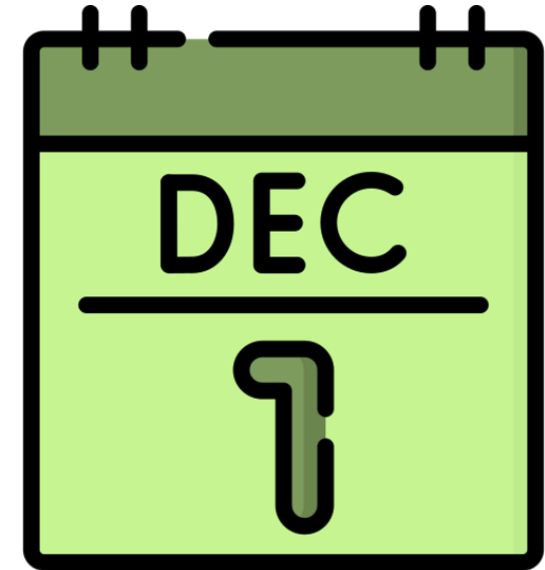




# Participant Data Collection Training

Training must be completed by **December 1** each year.

- Complete the training
- E-sign the form and submit to your supervisor for their signature



December icons created  
by Freepik - Flaticon

MORE  
INFO

Required Ongoing Trainings – CFHL, UC website



## WHAT IS IT?

*J-TICH* is an online, open-access journal, committed to advancing nutrition security by sharing your work, research and stories.

## WHO IS IT FOR?

Those interested in sharing or learning about food security and community health.

- Researchers
- Academics
- implementers
- Evaluator
- Students
- Community
- Policy Makers

	Publication Date
<b>Volume 2(2) - Currently in Review</b>	November 20, 2024.
<b>Volume 3(1) - Currently accepting Submissions</b>	<ul style="list-style-type: none"><li>● Submission due date: January 8, 2025</li><li>● Publication date: March 5, 2025</li></ul>
<b>Volume 3(2)</b>	April 30, 2025 (CFHL Forum Poster Book)
<b>Volume 3(3):</b>	July 16, 2025
<b>Volume 3(4):</b>	November, 19, 2025

# Thank you!

## Next Town Hall: Tuesday November 19, 2024



Image Source: Gellinger via Pixabay/ CC0