



This presentation was produced by the UC Davis Center for Regional Change and commissioned and supported by UC CalFresh.

It references materials developed by and available through the center at:

<http://interact.regionalchange.ucdavis.edu/youth/resources.html#learn>

On behalf of the California Department of Social Services, the California Department of Public Health, UC CalFresh, California Department of Aging, and Catholic Charities of California, we are pleased to welcome you to the

California SNAP-Ed training:

Supporting Youth Use of Data & Mapping for Community Change



Workshop Facilitators



Brandon Louie
UC Davis Center for
Regional Change

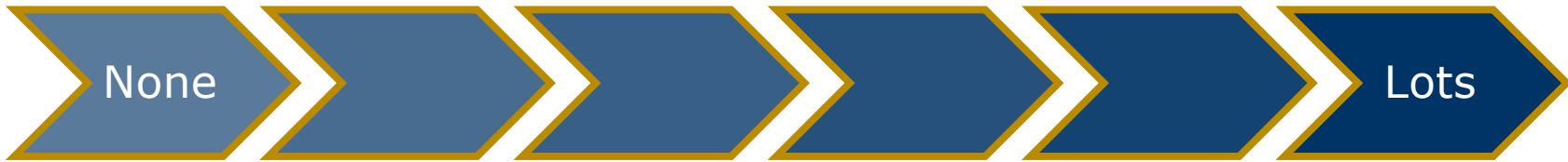


Dalene Branson
California Department of
Public Health

Agenda

- Introduction & Icebreaker
- Post-Lunch Energizer: Vocabulary Relay Race
- Introduction to the Making Youth Data Matter Curriculum
- Body Mapping Activity
 - Break -
- Creating Maps with PYOM & ROI
- Using Maps & Data for Community Change
- Next Steps & Close

Youth Leadership in PSE Change Efforts



(e.g. YPAR, etc.)

Goal:

Systematically build upon UC CalFresh's nutrition education programs to increase youth leadership through authentic youth engagement opportunities that lead to policy, systems and environmental change promoting nutrition and physical activity.

Think, Pair, Share

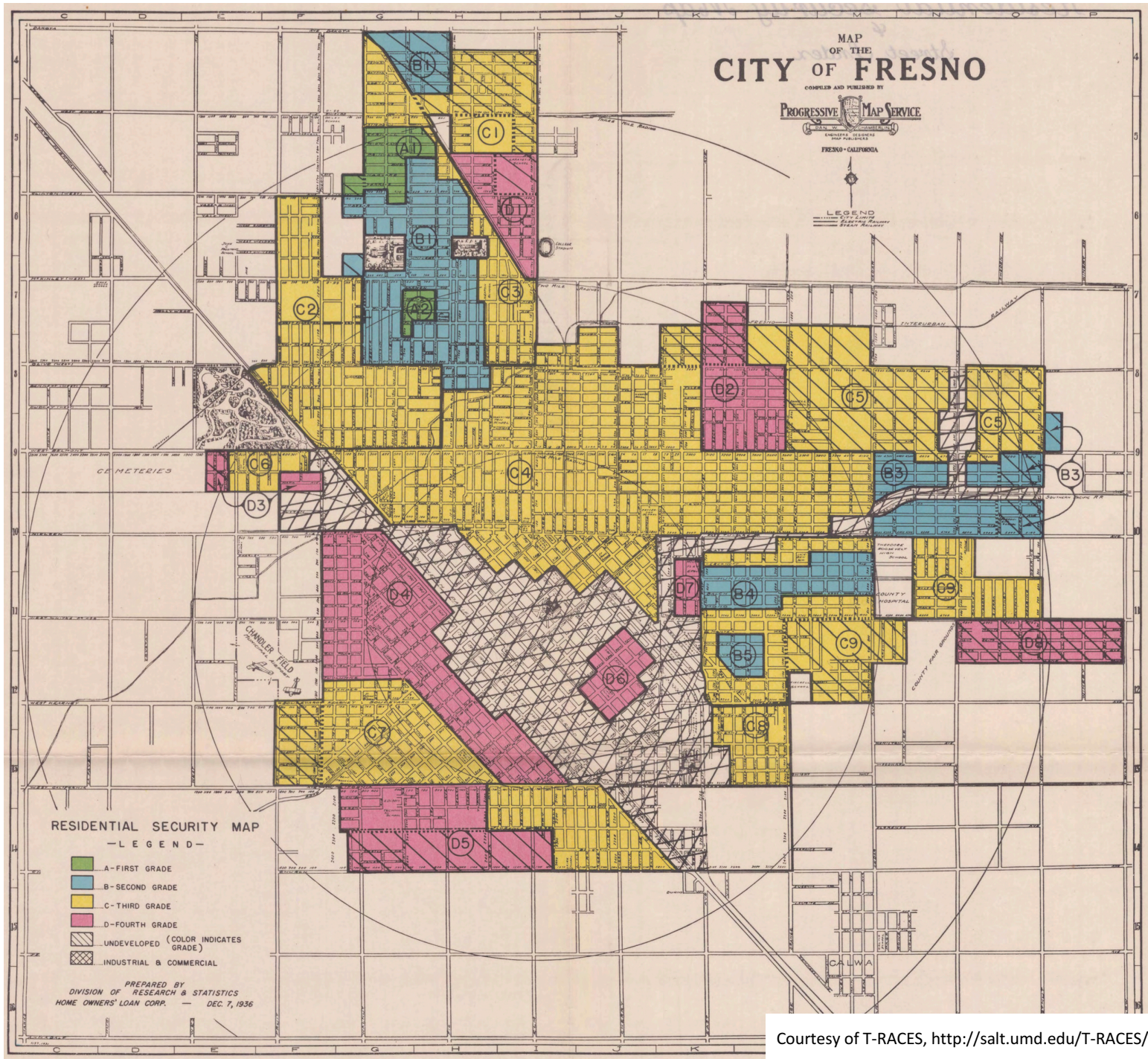
- How have you used data and maps?
Who created them?
- How have you seen data and maps used?
- Why are data and maps important?



VOCABULARY RELAY RACE

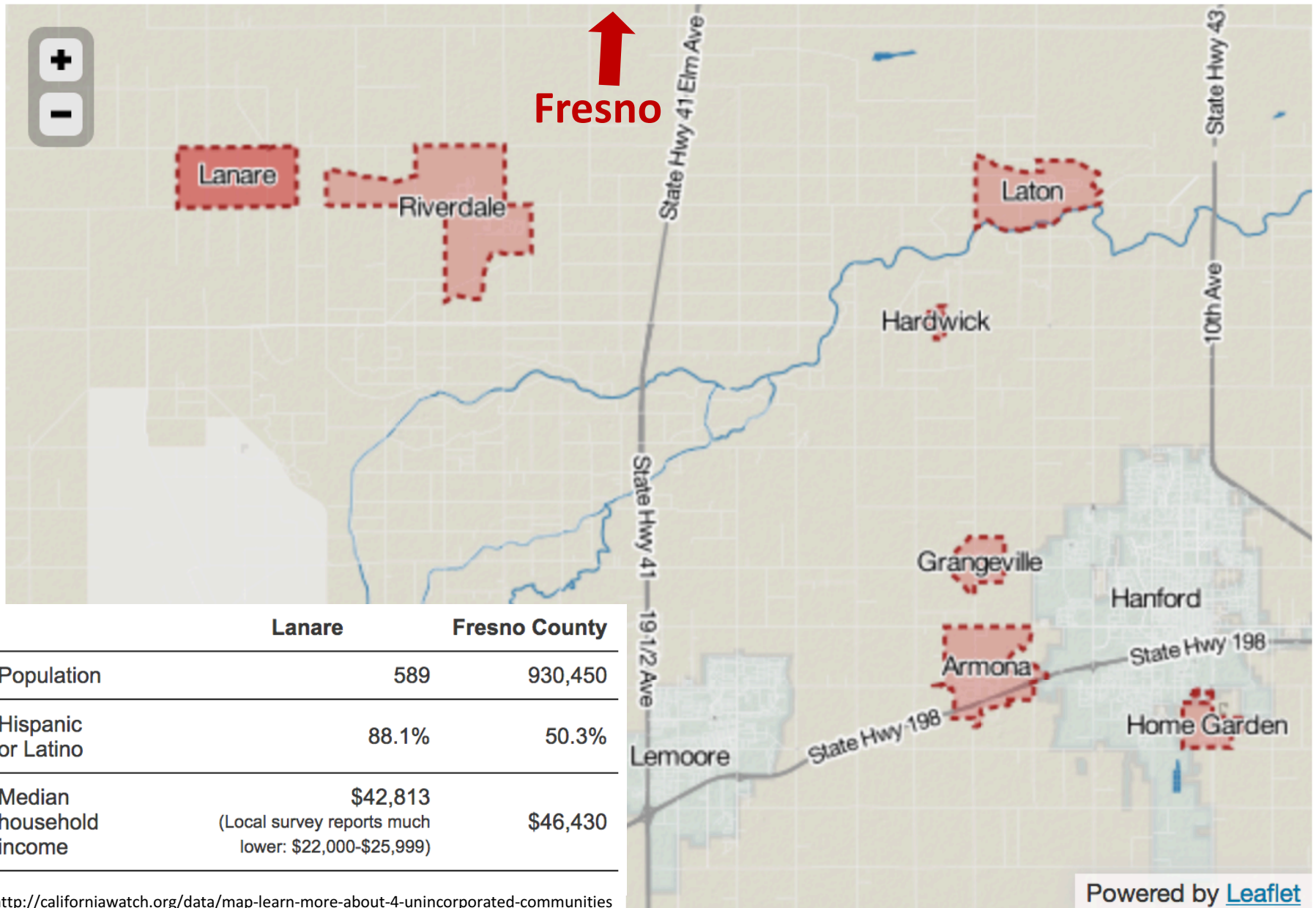


INTRODUCTION TO THE MAKING YOUTH DATA MATTER CURRICULUM



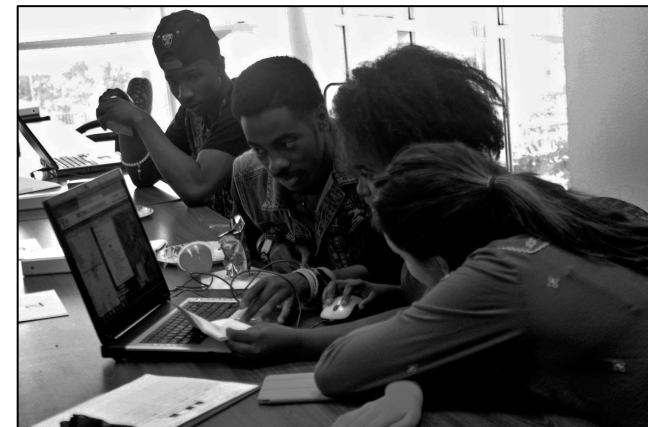
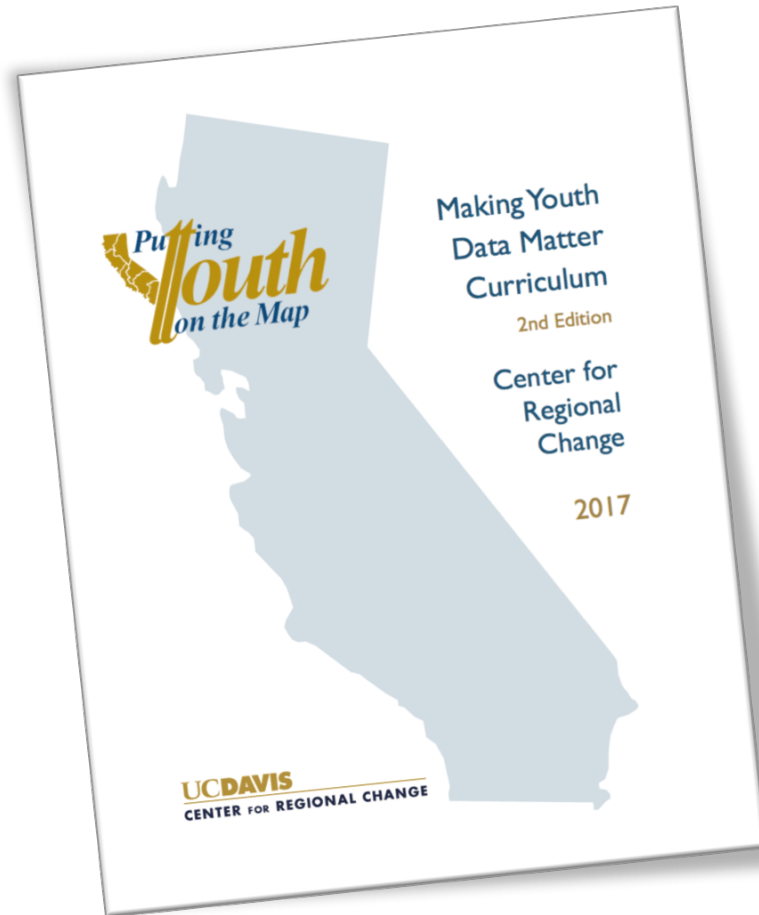
Courtesy of T-RACES, <http://salt.umd.edu/T-RACES/>

Color key Incorporated city or town U.S. Census-designated unincorporated place



<http://californiawatch.org/data/map-learn-more-about-4-unincorporated-communities>

Making Youth Data Matter Curriculum



<http://interact.regionalchange.ucdavis.edu/youth/resources.html#learn>

Making Youth Data Matter Curriculum

Module 1

Goals:

- Develop an understanding of the importance of data and mapping
- Understand how data and mapping have been used historically
- Discuss how data and mapping can be accessed and used in your local work

Activity 1.1: Data and Mapping Breakdown

Activity 1.2: Mapping Matters

Activity 1.3: Mapping in Our Community

Making Youth Data Matter Curriculum

Module 2

Goals:

- Introduce Putting Youth on the Map (PYOM) as an interactive tool
- Learn about the possibilities and limitations of PYOM
- Gain a basic understanding of navigating the PYOM site

Activity 2.1: Map Chat

Activity 2.2: PYOM Overview

Activity 2.3: How to Create Maps

Making Youth Data Matter Curriculum

Module 3

Goals:

- Learn about the language of data
- Gain a deeper understanding of the Youth Well-Being Index and the Youth Vulnerability Index
- Become familiar with the analyses of youth voting

Activity 3.1: Vocabulary
Relay Race

Activity 3.2: Body Mapping

Activity 3.3: PYOM Jeopardy

Activity 3.4: CCEP Data

Activity 3.5: Beyond Indices

Activity 3.6: The Data-ing Game

Making Youth Data Matter Curriculum

Module 4

Goals:

- Learn how PYOM complements and bridges Youth-led Participatory Action Research and Participatory Mapping processes
- Gain a basic understanding of participatory tools for change
- Learn how to use Google Maps
- Find out how to use PYOM to support participatory mapping research

Activity 4.1: Getting to Know PYOM Resources

Activity 4.2: Other Tools for Community Change

Activity 4.3: YPAR/Mapping Simulation



BODY MAPPING

Getting to Know Indices

An index scans many measures to paint a big picture...

An index can be represented by a score, such as a Grade Point Average (GPA), which gives an overall sense of how well a student does in school

FLINT COMMUNITY SCHOOLS
923 E. Kearsley St., Flint, MI 48503

ACADEMIC P...

STUDENT NAME [REDACTED] STUDENT # [REDACTED]

CLASS	TEACHER	MARKS			
		MP	MP	MP	MP
ENVIRONMENTAL SCIE	MR HOLEC	A			
YEARBOOK	MRS LABELLE	A-			
ENGLISH 11 AMERICA	MRS WORTHAM	A			
ALGEBRA 2	MR MCGLASHEN	A-			
WORLD STUDIES (NOT	MS MCFADDEN	A+			
CHEMISTRY	MS LEE	A			

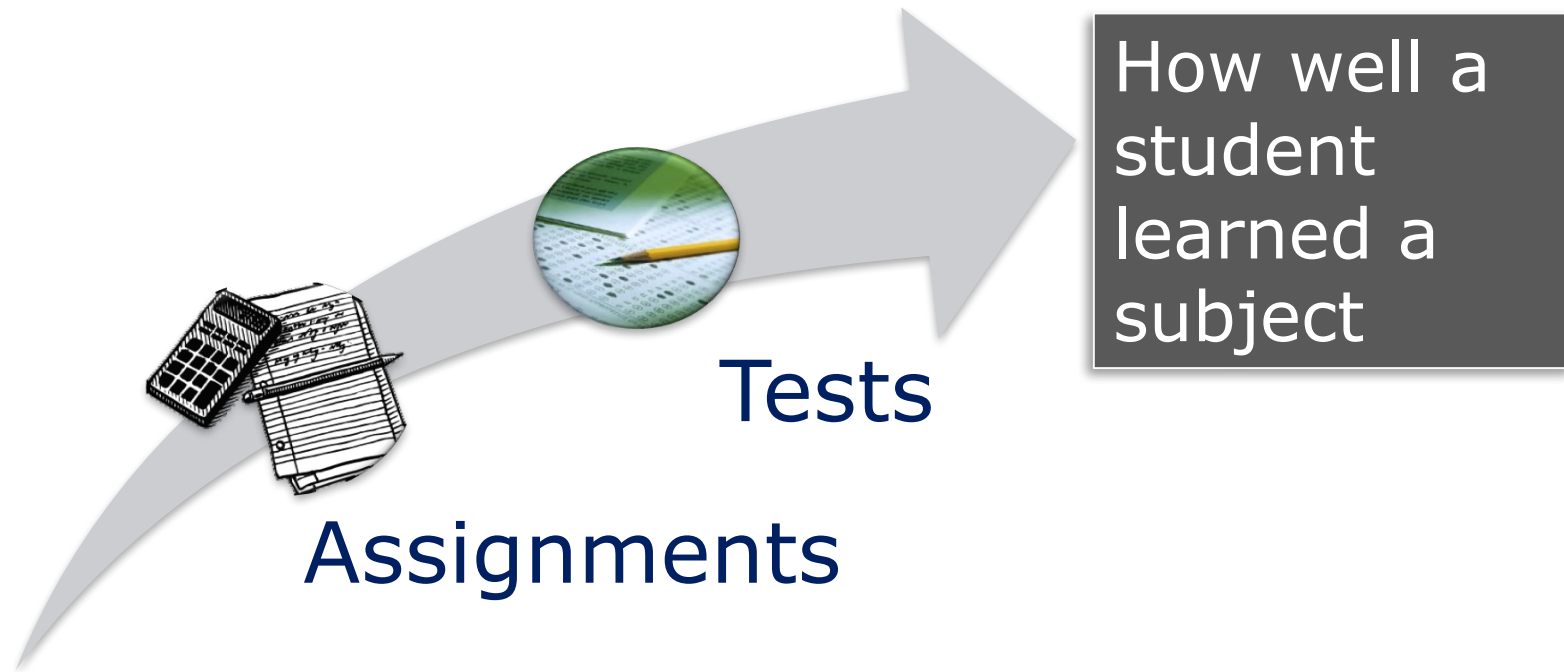
TRANSCRIPT INFORMATION

	CREDITS	GPA
PERIOD	N/A	4.000
STER	N/A	N/A
YEAR	4.000	3.250
ATIVE	14.500	2.406

ACT/MEAP testing
Eligible seniors w
days are non-sch
and April 16. Sp
Whiteley, 760-11

Getting to Know Indices

The key ingredient of an index is an indicator, which is a related set of measures that all point to the same thing



Body Mapping Prompts

Education:

- What issues are youth facing at school?
- What issues are youth facing when it comes to succeeding in school? (these issues can be both in or out of school)

Health:

- What issues/barriers keep youth from gaining access to quality health care?
- What issues keep young people from being physically fit?
- What issues are keeping young people from fighting off illness?

Social Relationships:

- What are the things that make it difficult for youth to have good relationships with:
 - Peers
 - Family
 - Adults (in school and in the community)

Community Involvement:

- What issues keep youth from being involved in their community?
- Who or what keep youth from being engaged?



BREAK!



CREATING MAPS WITH PYOM & ROI

CRC's Mapping Tools: ROI & PYOM



- Maps assessing the availability of opportunity across economic, social, infrastructure, and environmental indicators
- Analyses by people and place
- Customizable reports and geographies



- Maps reflecting holistic measures of youth wellness and vulnerability
- Analyses by race/ethnicity, sex, and place
- Curricula to help youth and community advocates use data maps

Sharing options via print and social media

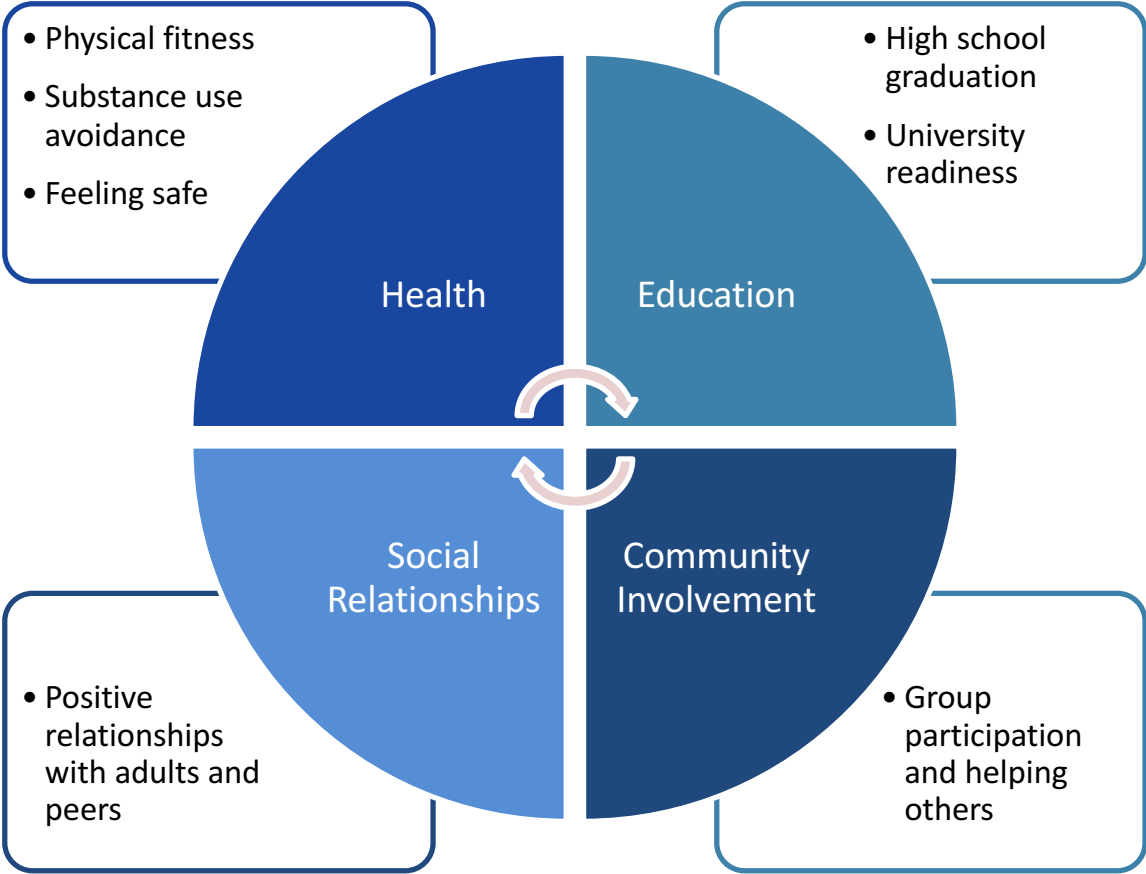
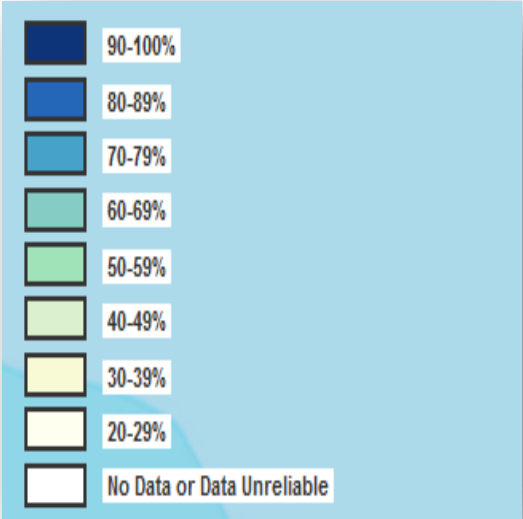
Statewide equity analyses

Downloadable data

Data Sources for ROI & PYOM

- **U.S. Census**
 - ACS 5-year datasets
- **California Department of Public Health**
- **California Healthy Kids Survey**
- **USDA Food Access Research Atlas**
- **California Department of Education**
- **Child Welfare Dynamic Reporting System**
- **California Department of Finance**
- **Federal Communication Commission**
- **California Registrar of Voters**
- **National Establishment Time-Series Dataset**
- **BLS Quarterly Census of Employment and Wages**
- **Federal Deposit Insurance Corporation (FDIC) and National Credit Union Association (NCUA)**
- **California EPA, Office of Environmental Health Hazard Assessment and Air Resources Board**

Youth Well-Being Index



Erbstein N., Hartzog, C., Geraghty, E. (2013). Putting Youth On the Map: A Pilot Instrument For Assessing Youth Well-being. *Journal of Child Indicators*, 6(2), 257-280.

Youth Vulnerability Index



	Most Vulnerable (4)
	Vulnerable (3)
	Somewhat Vulnerable (2)
	Least Vulnerable (1)
	No Data or Unreliable Data



Regional Opportunity Index Indicators

People

Education

- % adults with post-secondary education
- % 4th graders proficient in ELA
- % 4th graders proficient in math
- Elementary school truancy rate

Economy

- % adult population employed
- % households above 200% FPL

Housing

- % households who own home
- % households paying <30% of income on housing

Mobility/Transportation

- % who commute 30 min. or less
- % households with at least 1 vehicle for worker
- Households with broadband

Health/Environment

- % healthy birthweight babies
- % births to teens
- Premature death rate <65 year olds

Social/Political Engagement

- % CVAP that voted in most recent election
- % adult population not linguistically isolated

Place

Education

- High school graduation rate
- % high school grads college ready
- % elementary teachers with >5 years experience and more than BA degree
- High school suspension and expulsion rate

Economy

- # jobs per 1000 people (5 mile radius)
- % jobs in high-paying industries (5 mile radius)
- % job growth in last year (5 mile radius)
- # banks per 1000 people (5 mile radius)
- % change in # of employers over 2 years (5 mile radius)

Housing

- % homes with <= 1 occupant per room
- Ratio of median income to median home value

Health/Environment

- % mothers receiving prenatal care in first trimester
- % with access to full-service grocery stores
- # healthcare providers per 1000 people (5 mile radius)
- PM2.5 air quality score

Social/Political Engagement

- % who live in same residence as a year ago
- % U.S. citizens

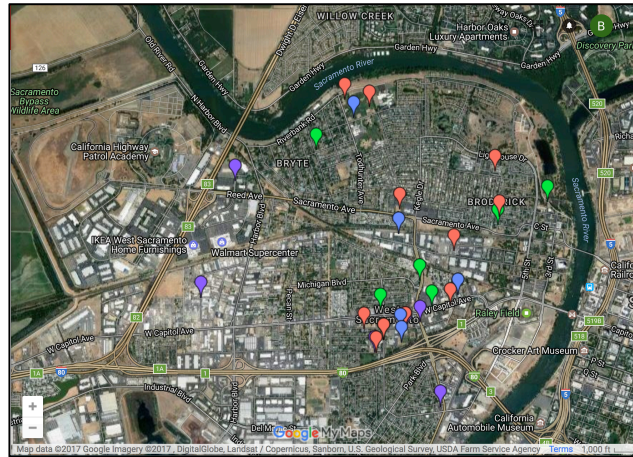


SITE DEMO & DATA SCAVENGER HUNT

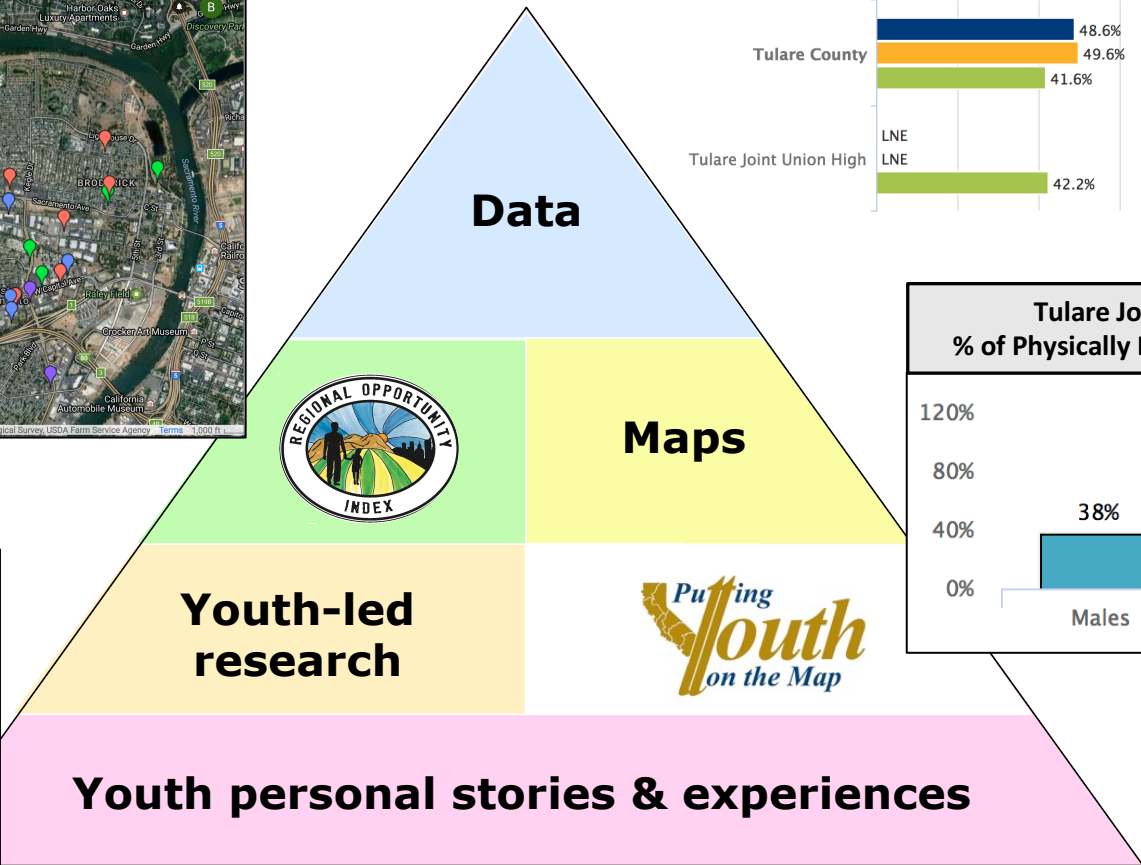
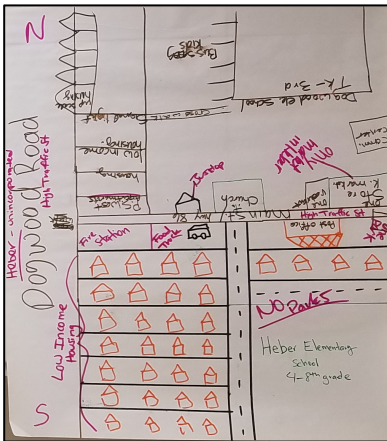


USING MAPS & DATA FOR COMMUNITY CHANGE

Building a Convincing Argument for Change

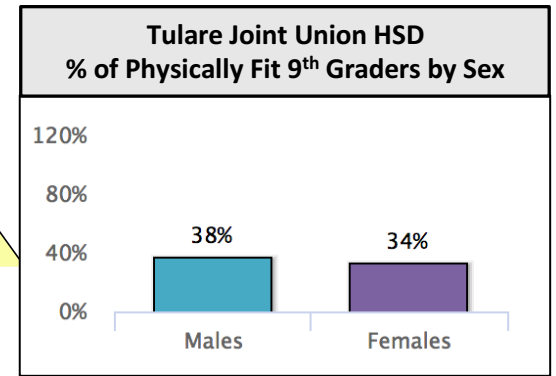
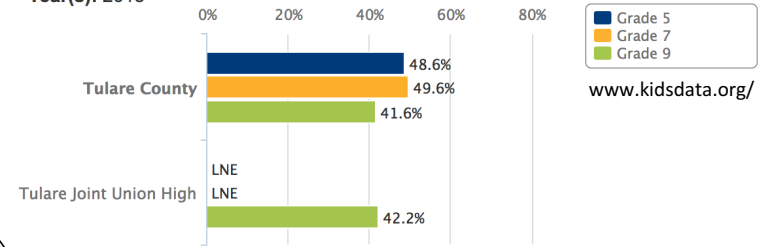


<http://artofregionalchange.ucdavis.edu>



Students Who Are Overweight or Obese, by Grade

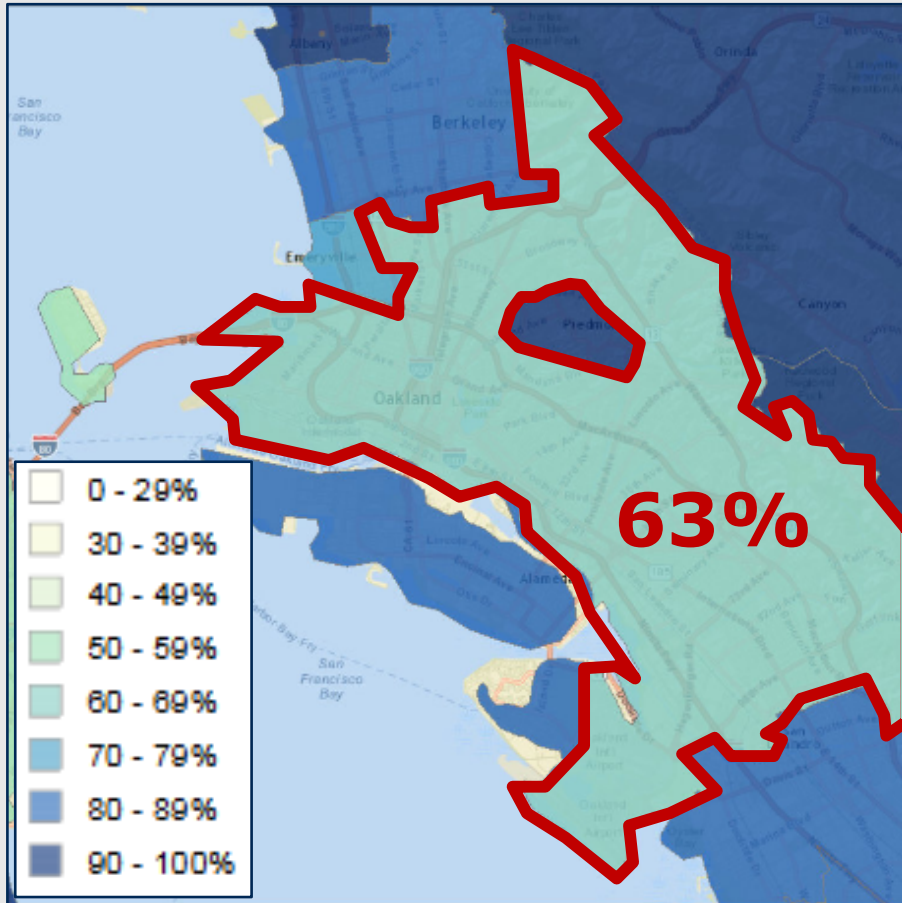
Year(s): 2015



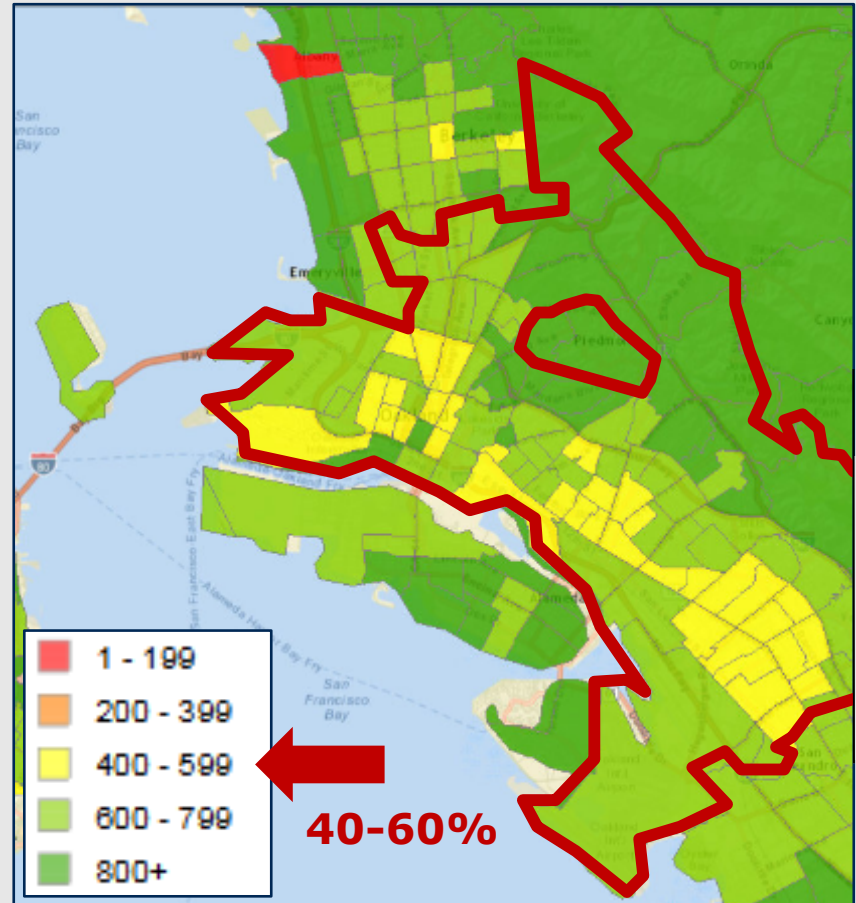
Putting Youth on the Map

Oakland Unified School District

High School Graduation Rate, 2011-13



Number of Households out of 1,000 with High-Speed Internet, 2012





NEXT STEPS



Thank you!

Brandon Louie
bplouie@ucdavis.edu

Dalene Branson
Dalene.Branson@cdph.ca.gov

interact.regionalchange.ucdavis.edu/youth/

interact.regionalchange.ucdavis.edu/roi/

This material was produced by institutions that represent SNAP-Ed in California, known as CalFresh, with funding from USDA SNAP-Ed. These institutions, the California Department of Social Services, the California Department of Public Health, UC CalFresh, California Department of Aging, and Catholic Charities of California, are equal opportunity providers and employers. CalFresh provides assistance to low-income households and can help buy nutritious food for better health. For CalFresh information, call 1-877-847-3663.

